

we celebrate

Many changes in services have occurred over the 100 year history of LCFS as fewer children needed adoptive homes and more families sought Christian counseling. The facility in Wauwatosa became a residential treatment center for boys in 1959, as well as a family counseling center in 1965. When the treatment center closed, offices were rented on 124th Street in 1981.

In 1987 the society's name changed to reflect the agency's expanded goals and objectives. Lutheran Children's Friend Society became Lutheran Counseling and Family Services.

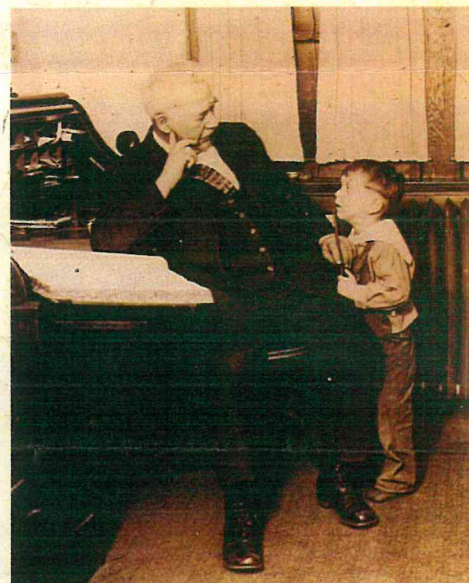
The building on Mayfair Road presently serving as the administrative offices and the Milwaukee Area Office was purchased in 1990.



Administrative and counseling offices on Mayfair Road in Wauwatosa, circa: 1990.



Child care workers with Kinderheim babies, circa: 1935.



Director Propp gives attention to a child, circa, 1935.



Children at the Kinderheim sledding, circa: 1935.



Twins in the nursery, 1950.